



American Dynamics

From Tyco Security Products

victor AMAG Integration User Guide

v5.3

Revision A0

Notice

The information in this manual was current when published. The manufacturer reserves the right to revise and improve its products. All specifications are therefore subject to change without notice.

Copyright

Under copyright laws, the contents of this manual may not be copied, photocopied, reproduced, translated or reduced to any electronic medium or machine-readable form, in whole or in part, without prior written consent of Johnson Controls.

© 2019 Johnson Controls. All Rights Reserved.

American Dynamics
6600 Congress Avenue
Boca Raton, FL 33487 U.S.A.

Customer Service

Thank you for using American Dynamics products. We support our products through an extensive worldwide network of dealers. The dealer through whom you originally purchased this product is your point of contact if you need service or support. Our dealers are empowered to provide the very best in customer service and support. Dealers should contact American Dynamics at (800) 507-6268 or (561) 912-6259 or on the Web at www.americandynamics.net.

Trademarks

Windows® is a registered trademark of Microsoft Corporation. PS/2® is a registered trademark of International Business Machines Corporation.

The trademarks, logos, and service marks displayed on this document are registered in the United States [or other countries]. Any misuse of the trademarks is strictly prohibited and Johnson Controls will aggressively enforce its intellectual property rights to the fullest extent of the law, including pursuit of criminal prosecution wherever necessary. All trademarks not owned by Johnson Controls are the property of their respective owners, and are used with permission or allowed under applicable laws.

Product offerings and specifications are subject to change without notice. Actual products may vary from photos. Not all products include all features. Availability varies by region; contact your sales representative.

Introduction

AMAG 9 Integration Overview.	1
Assumptions.	1
AMAG 9 Requirements	1
victor Application Server.	1
victor Unified Client	2
Licensing	2
Features	3

Installation

Minimum Requirements	4
Hardware	4
Software	4
Pre-Installation Tasks.	4
Initial Configuration.	9

Administration

victor Integration Information	11
Roles.	11
Reports	11
Events.	11
Maps.	11

AMAG Integration Configuration

AMAG Integration Configuration	12
AMAG Device Configuration	15

AMAG Commands

Overview	17
AMAG Server Commands	18
Show Recent Transactions	19
Reader Commands.	19
Monitor Point Commands	20
Auxiliary Output Commands	20
Node Commands	20

Maps

Introduction.	21
Map Template	21

Create a Map	22
Add or Configure Icons.	23
Add or Configure Icons Using Drag and Drop	23
Clone Icons	24
Configuring areas.	24
Polygon Shapes	25
GIS Level Maps	26
Alarm Zoom	26
Live Mode vs. First Loaded.	27
Map in Map.	27
Viewing Maps.	27
Editing Maps.	29

Event Configuration

Overview	31
Event or Action Pairing Editor	34
Events Setup	35
Event Status Mapping	35

Settings

Introduction.	36
AMAG Settings.	36

AMAG Device States

Overview	37
AMAG Server States	37
Reader States	37
Monitor Point States.	37
Auxiliary Output States.	38
Node States	38

AMAG Alarms

AMAG Alarms.	39
----------------------	----

Introduction

AMAG 9 Integration Overview

This documentation covers the installation of victor AMAG 9 Integration and an overview of the AMAG 9 Integration features and benefits.

The victor AMAG 9 Integration driver provides a powerful, flexible and easy to use Graphical User Interface (GUI) for managing AMAG 9 infrastructure through victor unified client from American Dynamics.

Assumptions

It is assumed that the end users and the installers of the AMAG 9 Integration have relevant experience and a good working knowledge in the following fields:

- 1 victor Unified Platform
- 2 Windows Operating System
- 3 Configuring Physical Security Environments

Note

Partners, Customers and Resellers configuring Tyco products should have relevant Tyco product training completed.

AMAG 9 Requirements

This integration supports connection to AMAG 9 System through the AMAG Server utilizing the AMAG API.

The connection is to the AMAG 9 database, therefore the server and the network or port should be configured to allow the connection from the victor Application Server to the AMAG 9 database.

The integration between victor and AMAG supports Alarm or Device filtering that is configured on the AMAG server. This feature is included in the AMAG v8.0 feature pack.

victor Application Server

victor Application Server stores all data, operator profiles, roles and event information and video recorder or camera objects.

Dual modes of user authentication allow users to login using Active Directory credentials or through a Basic method which does not require a domain controller.

Operator profiles are portable and allow users to move from one victor client to another, and the credentials remains same regardless of the PC.

victor Application Server restricts devices and features than an operator can access by assigning roles and by using victor's included policy management. Permissions are set system wide for fire objects.

Any feature can be limited and updated as situations allows. Victor also journals and tracks what has happened on your systems, such as operator activities, fire alarm and point history, creating an audit trail.

victor Unified Client

Victor unified client connects to the victor Application Server, allowing event management, observation and monitoring.

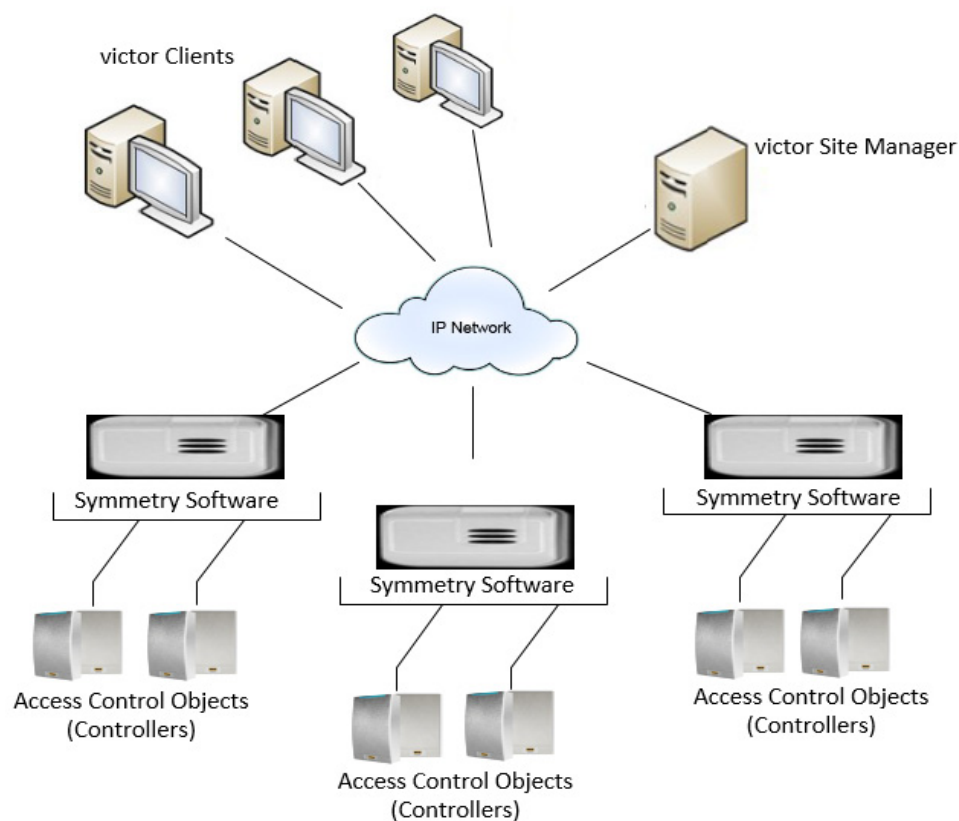
Licensing

The AMAG 9 driver is a licensed integration for victor. Please contact American Dynamics support for an AMAG Driver Server license. Once the new license is applied, all the Framework or Extension services will restart.

In the Server Configuration Application, the AMAG Driver Service will display as **Stopped**. Check the box and click **Start**.

Note

The Server Configuration Application should be Run as Administrator (right-click **Server Configuration** and then click **Run as Administrator**) to make this change.

Figure 3-1 System Overview

Features

The objective of the victor AMAG 9 Integration is to provide a standard, single interface between AMAG 9 devices and American Dynamics victor Unified Management product.

AMAG 9 Integration supports the AMAG Access Control feature.

Installation

Minimum Requirements

Hardware

AMAG 9 Integration has the same hardware requirements as victor Unified Client and victor Site Manager. Therefore, if the machine can successfully run victor then it will satisfy AMAG 9 Integration requirements.

Software

- AMAG victor Integration
- victor Application Server: v5.3
- victor Unified Client: v5.3

Pre-Installation Tasks

Before installing the AMAG 9 Integration, ensure the following:

On the victor Application Server:

- You must have appropriate Windows permissions.
- You must be a member in the local Administrators group, or have equivalent privileges.
- The victor Application Server must be installed with the AMAG 9 Integration.

On the Clients:

- You must have appropriate Windows permissions.
- You must be a member in the local Administrators group, or have equivalent privileges.
- The victor client must be installed.

Installing AMAG 9

The AMAG 9 Integration Driver can be installed on the victor Application Server.

Hotfix 5.3_HF20181220 is required for victor to allow the **Swipe and Show** and **Personnel** functionality to work. Refer to Figure 4-1 on page 5 and Figure 4-2 on page 5.

Figure 4-1 Config Screen-Hotfix Setup Ready

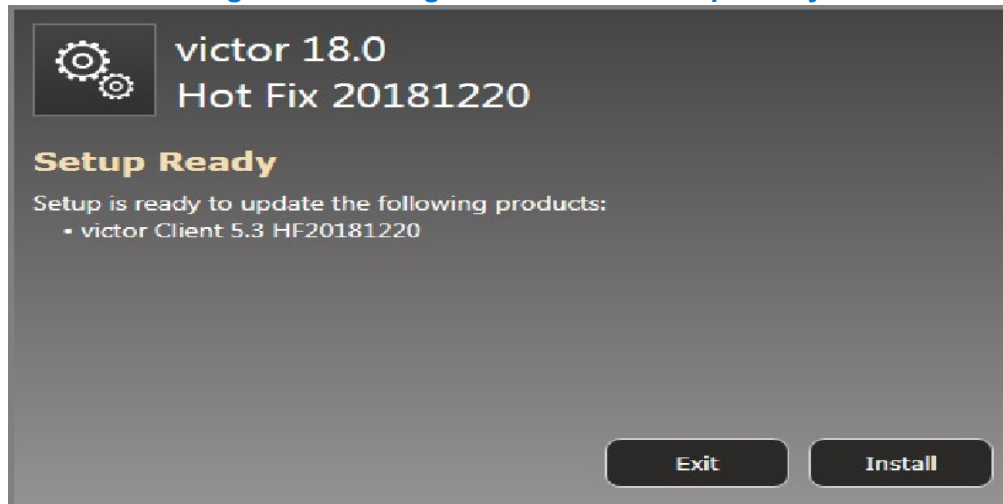
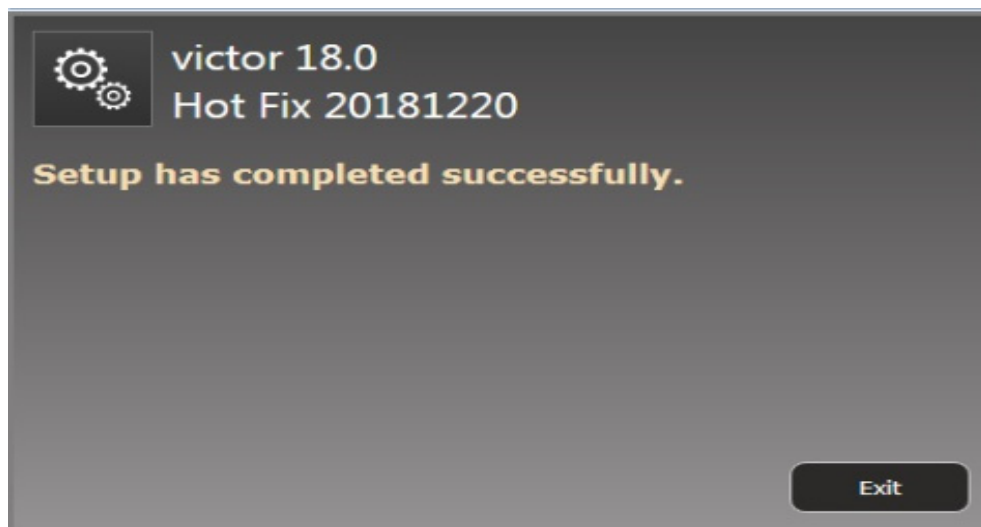


Figure 4-2 Config Screen-Hotfix Setup Completed



Note

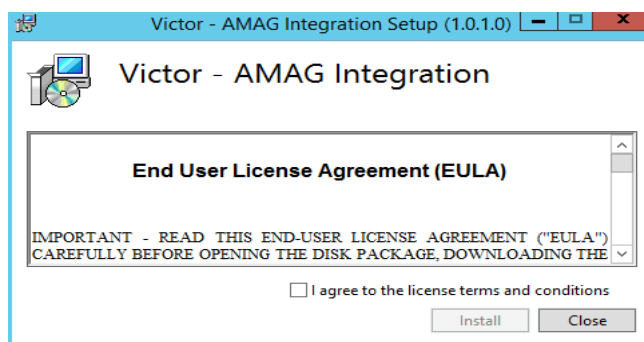
It is recommended to stop the CrossFire Framework Service, and close the Server Configuration application before running the driver installer.

Procedure 4-1 Installing AMAG 9 on victor Application Server

Step	Action
------	--------

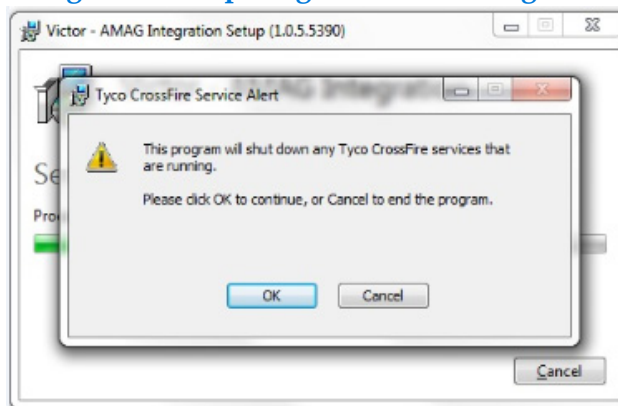
- | | |
|---|---|
| 1 | Close all running programs and stop all services. |
| 2 | Navigate to http://www.americandynamics.net and download the appropriate version of the AMAG 9 Software Driver. |
| 3 | Double-click the AMAGSetup_xxxx_AD.exe file to launch the installer. The AMAG Integration Setup dialog box shown in Figure 4-3 on page 6, opens. |

Figure 4-3 AMAG Integration Setup Dialog Box



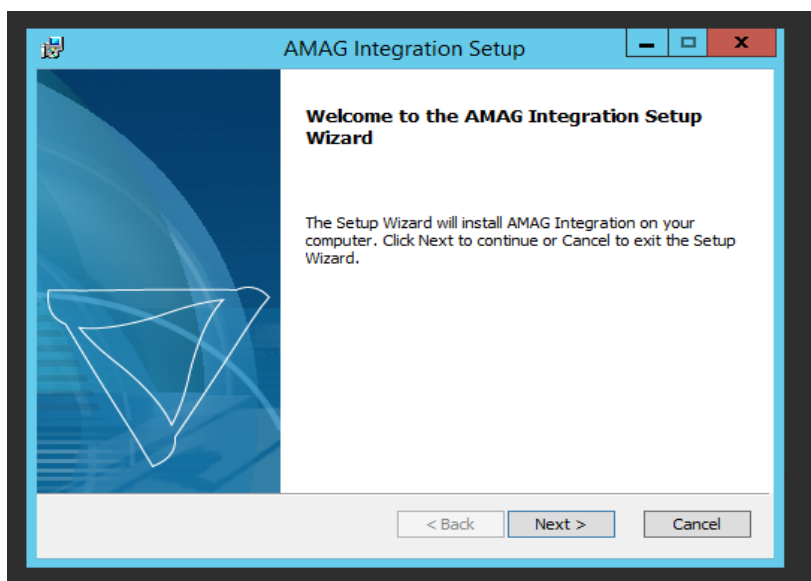
- | | |
|---|--|
| 4 | Read the The End User License Agreement EULA and select the I agree to the license terms conditions check box, then click Install . |
| 5 | The Tyco CrossFire Service Alert dialog box shown in Figure 4-4 on page 6 appears if you are installing the AMAG 9 Integration on a victor server and the CrossFire service is running. When the CrossFire services are stopped the Tyco CrossFire Service Alert dialog box does not appear. |

Figure 4-4 Preparing to Install Dialog Box



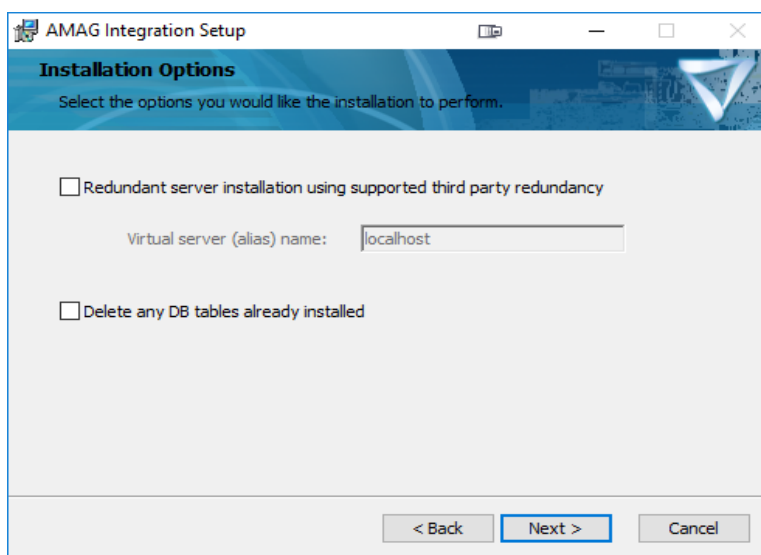
- | | |
|---|--|
| 6 | Click OK to shut down CrossFire services and to continue with the installation. The AMAG Integration Setup Wizard as shown in Figure 4-5 on page 7 appears. |
|---|--|

Figure 4-5 AMAG Integration Setup Wizard



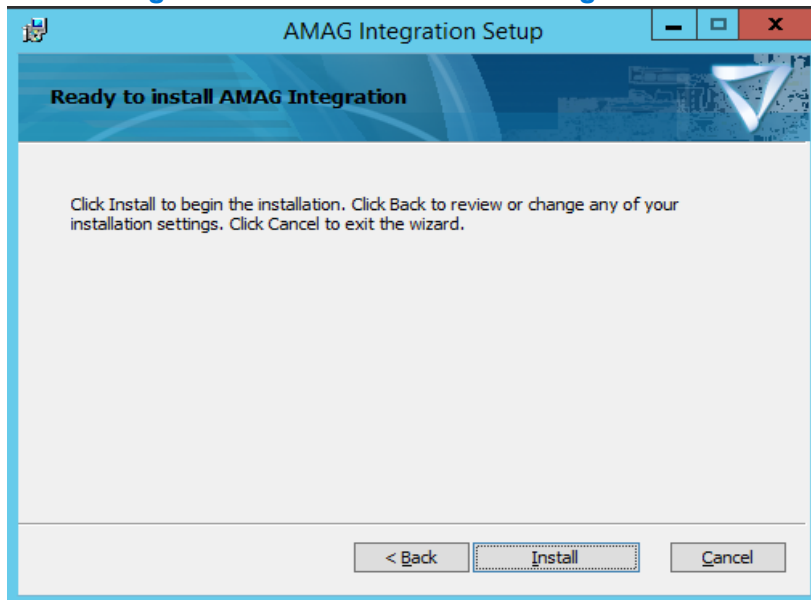
- 7 Click **Next**. The Installation Options screen as shown in Figure 4-6 on page 7 appears.
- 8 If you are installing the driver in a redundancy environment, then select the **Redundant server installation using supported third party redundancy** option and the enter the **Virtual Server (alias) Name** of the Redundant Environment.
- 9 If you are installing a completely new version of the AMAG tables and overwriting the current installation, then select the **Delete any DB tables already installed** option. If it is a new installation, then do not select the **Delete any DB tables already installed** option.

Figure 4-6 Installation Options



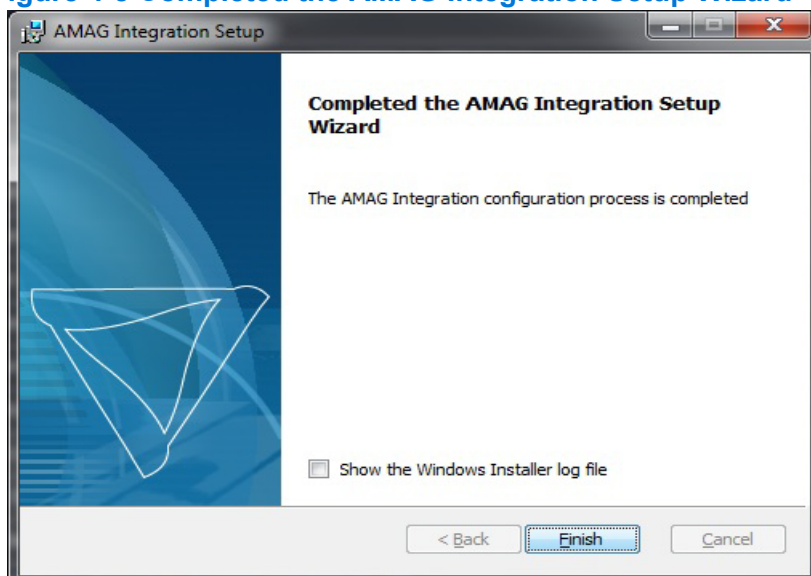
- 10 Click **Next**. The Ready to Install AMAG Integration dialog box, shown in Figure 4-7 on page 8, appears.

Figure 4-7 Database Server Dialog Box



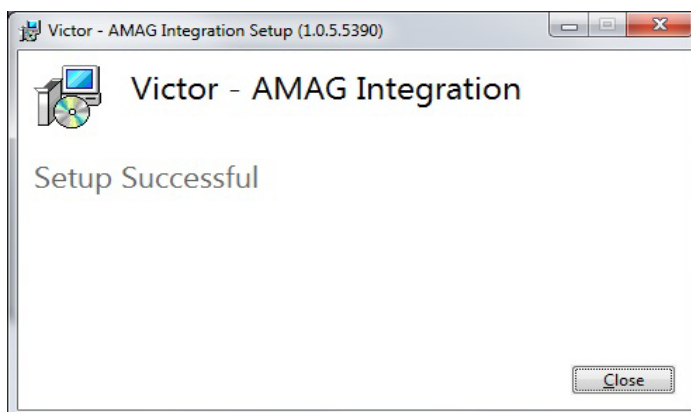
- 11 Click **Install** to start the installation, or click **Back** to review or change the installation settings. Once installation is completed, the Completed the AMAG Integration Setup Wizard, shown in Figure 4-8 on page 8, appears. This operation may take a few minutes.

Figure 4-8 Completed the AMAG Integration Setup Wizard



- 12 Click **Finish** to exit the Setup Wizard. The Setup Successful dialog box, as shown in Figure 4-9 on page 9, opens.

Figure 4-9 Setup Successful Dialog Box



- 13 Click **Close** to exit the AMAG Installation.

Initial Configuration

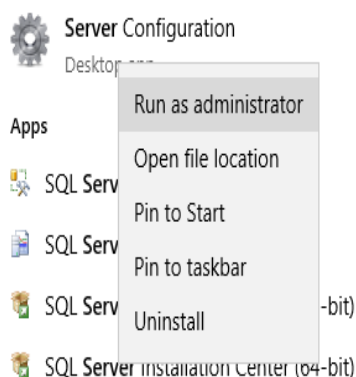
Procedure 4-2 Configuring the Server Services

Note

Services may start automatically after installation, depending on the Windows configuration.

Step	Action
------	--------

- | | |
|---|--|
| 1 | <p>Launch the Server Configuration Application by completing the following steps:</p> <ol style="list-style-type: none"> From the Windows Start menu, click All Programs and then click Tyco. Right-click Server Configuration and then click Run as Administrator. Server Configuration Application page opens. |
|---|--|



- | | |
|---|---|
| 2 | <p>Restart the CrossFire Services:</p> <ol style="list-style-type: none"> On the Server Configuration Application page, click to open the Services tab. In the Framework Services area, click the Stop button beside Crossfire Framework Service to stop all services. Wait for the status to change to Stopped. Click the Start button beside Crossfire Framework Service and wait for the status to change to Running. |
|---|---|

Administration

victor Integration Information

Roles

victor **Roles** support AMAG Integration device privileges, therefore all context menu actions associated with the devices are added to existing victor **Roles** which can be edited accordingly. For more information on **Roles**, refer to the *victor Unified Client Configuration and User Guide*.

Reports

victor's **Reports** selection tool and **Find in Journal** feature support AMAG Integration objects. For more information on **Reports** and the **Find in Journal** feature, refer to the *victor Unified Client Configuration and User Guide*.

Events

victor **Events** supports AMAG Integration objects allowing you to detect, monitor and record specific activities on the system. For further information on **Events**, refer to the *victor Unified Client Configuration and User Guide*.

Maps

victor **Maps** and **Find on Map** features support AMAG Integration objects. For more information on **Maps** and the **Find on Map** feature, refer to the *victor Unified Client Configuration and User Guide* are available on the American Dynamics website <http://www.americandynamics.net>.

AMAG Integration Configuration

AMAG Integration Configuration

AMAG Servers and all underlying hardware configured and connected to AMAG can be added to victor. To add an AMAG connection to victor, carry out the following steps:

Procedure 5-1 Adding AMAG Server

Refer to Figure 5-1 AMAG Server on page 13.

Step	Action
1	Select the Create New Item icon.
2	Select the AMAG Server .
3	Enter a Name of the server in the Name field and optionally a Description of the Server in the Description field. For more information about fields, refer to Figure 5-1 AMAG Server on page 13.
4	Select the Enabled check box.
5	Enter the details in the AMAG Server such as Server Host or IP Address , Username and Password for the AMAG connection.
6	Set the Event Poll Interval in milliseconds to adjust the rate at which the driver polls the AMAG server for updates.
Note The lower the interval value, quicker updates will be received from AMAG and a higher value will reduce network load. The default value is 500ms.	
7	Set the Status Poll Interval in milliseconds to adjust the rate at which the driver polls the AMAG server for hardware status updates.
Note The lower the value, the quicker updates will be received from AMAG and the higher value will reduce network load. The default value is 1000ms.	
8	Select the Use https check box, if an SSL connection is required.
9	Select the Default Journal Events check box to enable journaling for all devices. This may be set separately per device. See AMAG Device Configuration on page 15.
10	Select the Default Status Polling check box to enable status polling for all devices. This may be set separately per device. See AMAG Device Configuration on page 15.
11	Set the Card Swipes Log Display Limit to fix the number of card swipes to store in the database for the Card Swipe transaction display.

Figure 5-1 AMAG Server

Name: **AMAG Server**

Description:

☒ Enabled

Server Host or IP Address: 192.168.171.164

Username: installer

Password: *****

Event Poll Interval: 500

Status Poll Interval: 1000

Use https: ☐

Default Journal Events: ☒

Default Status Polling: ☒

Card Swipes Log Display Limit: 10

Last Sync Time : 19/09/2018

Last Personnel Sync Time : 19/09/2018

Sync Status : Synchronized

Personnel Sync Status : Synchronization Status Unknown

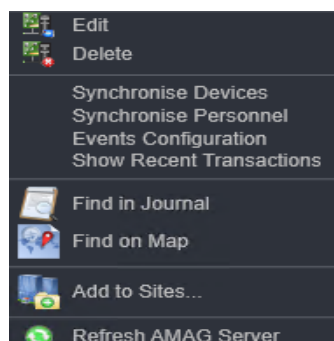
Server Connection : Connection Successful

- 12 Click **Save**. The AMAG server is saved and will appear in the Device List.

Note

The AMAG Server and victor Server must be connected to the same NTP time source otherwise they will not sync.

- 13 Right-click the **Server** icon in the Device List and select **Synchronise Devices**. All devices connected to the AMAG server are synchronized.



- 14 Right-click again the **Server** icon and select **Synchronise Personnel**. All personnel on the AMAG server are synchronized.

- End -

Procedure 5-2 Testing AMAG Connectivity

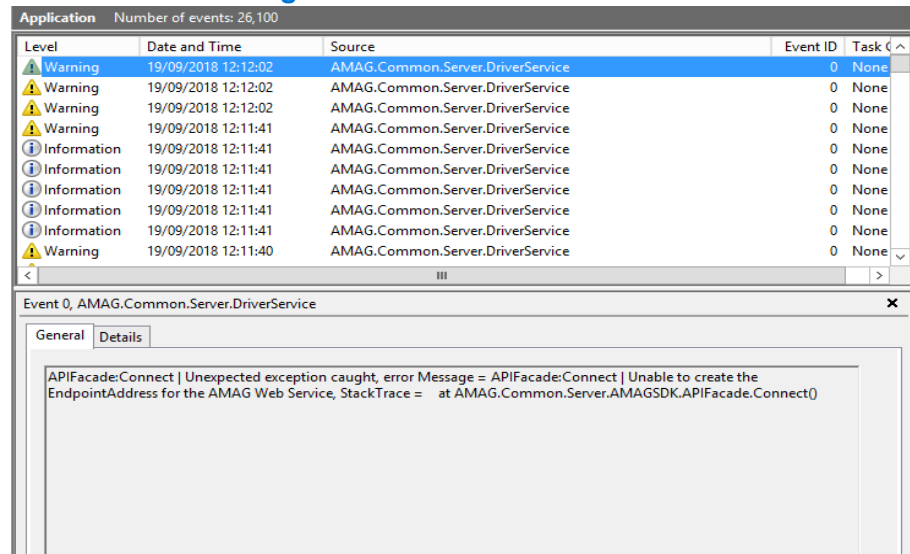
Step Action

- 1 Open the Microsoft **Event Viewer** to check for errors under Windows Logs > Application logs, if the device list does not load. Refer to Figure 5-2 Event Viewer on page 14.

Note

See **System Values** section to configure diagnostic logs to appear in the Event Viewer for more information.

Figure 5-2 Event Viewer



- 2 Navigate to **New Tab** and then the **Activity Viewer**, to verify if the AMAG events are appearing into the Journal. Refer to Figure 5-3 Activity Viewer on page 15.

Figure 5-3 Activity Viewer

Date - Time	Activity
19/09/2018 12:13:56	AMAG Server [AMAG Server] Connection Status: Disconnected.
19/09/2018 12:13:56	AMAG Server [AMAG Server] Connection Status: Connecting.
19/09/2018 12:13:57	AMAG Server [AMAG Server] Connection Status: Connection Successful.
19/09/2018 12:14:13	AMAG Server AMAG Server Device Synchronization Status: Synchronizing.
19/09/2018 12:15:11	AMAG Server AMAG Server Personnel Synchronization Status: Synchronizing.
19/09/2018 12:15:44	AMAG Server AMAG Server Personnel Synchronization Status: Synchronized.
19/09/2018 12:16:38	Event [Warning: Simulated Transactions Active] on AMAG Device: AMAG Server. (Warning: Simulated Transactions Active).
19/09/2018 12:16:39	Event [Door Forced] on AMAG Device: Reader 1. (Door Forced).
19/09/2018 12:16:40	Event [Door Forced] on AMAG Device: Reader 1 (Reader). (Door Forced).

AMAG Device Configuration

The following parameters can be configured for AMAG Reader, Monitor Point and Auxiliary Output objects, refer to Figure 5-4 AMAG Device Configuration on page 15:

- **Journal Alarms:**
 - **Default:** The default setting configured on the server object.
 - **Yes:** Alarms are journaled for this object regardless of server settings.
 - **No:** Alarms are not journaled for this object regardless of server settings.
- **Poll Status:**
 - **Default:** The default setting configured on the server object.
 - **Yes:** Alarms are journaled for this object regardless of server settings.
 - **No:** Alarms are not journaled for this object regardless of server settings.

Figure 5-4 AMAG Device Configuration

Name: Reader 1
Description:
☒ Enabled

Journal Alarms : Default ▾
Poll Status : Default ▾

Device Address : 1003
Reader State : Unknown
Latest Alarm : Door Forced

The following parameters can be configured for AMAG Node objects:

- **Alarms Enabled:**

- **Default:** The default setting configured on the server object.
- **Yes:** Alarms are journaled for this object regardless of server settings.
- **No:** Alarms are not journaled for this object regardless of server settings.

AMAG Commands

Overview

AMAG Commands are commands issued by victor to AMAG objects. AMAG Commands can be accessed by right-clicking an object from the **Device List** or from victor **Maps**, refer to Figure 6-1 Device list on page 17 and Figure 6-2 victor Maps on page 18.

Figure 6-1 Device list

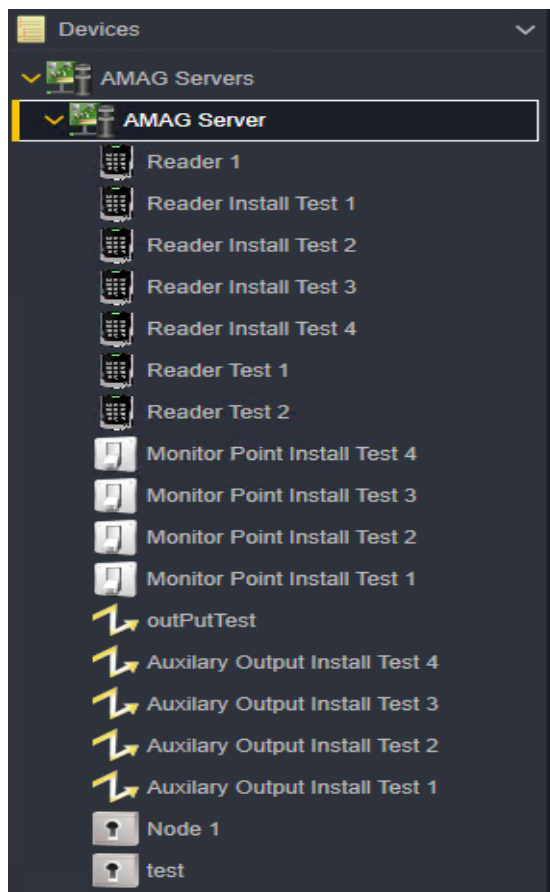


Figure 6-2 victor Maps



AMAG Server Commands

Table 1 on page 18 defines the Server Commands and their descriptions:

Table 1: AMAG Server Commands and Descriptions

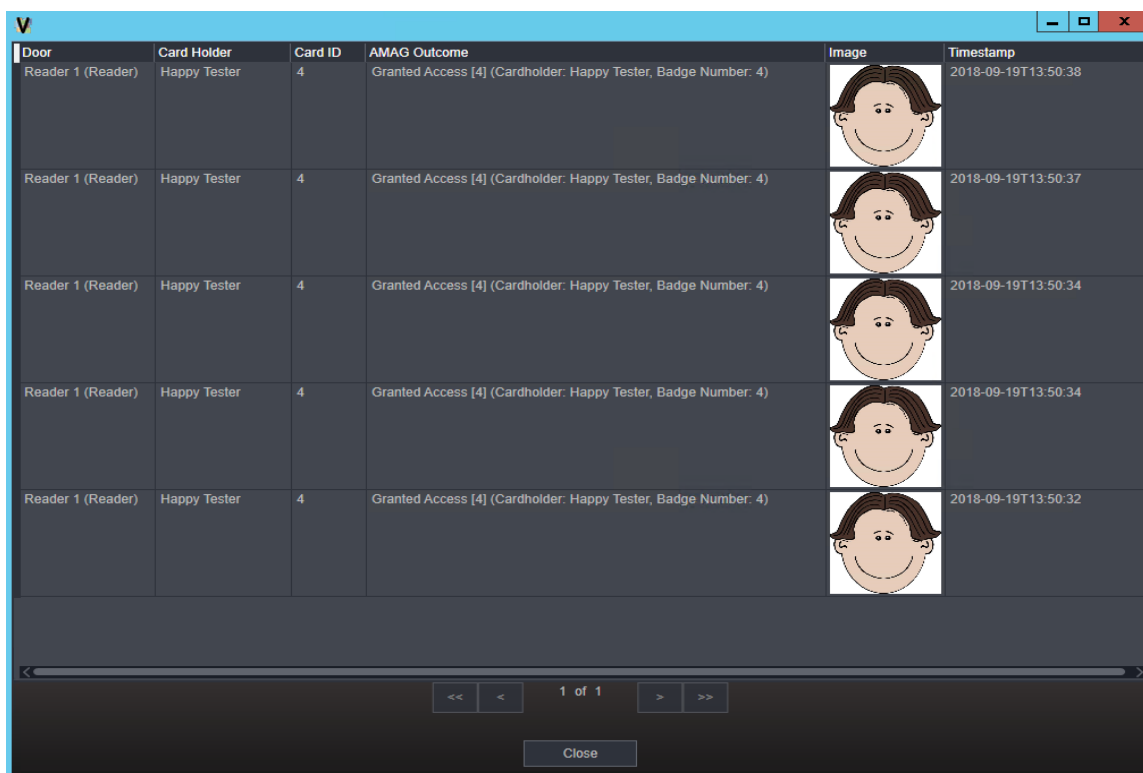
Command	Description
Synchronise Devices	Synchronises all supported devices (such as readers, outputs, inputs and broadcast zones) from the AMAG Server into victor as AMAG Objects.
Synchronise Personnel	Synchronises all AMAG cardholders or users from the AMAG Symmetry Server into victor as victor Personnel. User images are also imported in the process and set as primary victor personnel image for that user.
Events Configuration	This command opens the event configuration window for the selected AMAG Server. AMAG events may be enabled or disabled from here.
Show Recent Transactions	This command opens the card swipe transaction display.






Show Recent Transactions

Show Recent Transactions command opens a badge swipe transaction view, and you can also use this command as an alternative to the **Swipe and Show** feature in victor.

Figure 6-3 Show Recent Transaction Command - Display Window on page 19 displays the AMAG card swipe outcome information, and also this window dynamically refreshes to show the latest card swipe transactions at the top.

Figure 6-3 Show Recent Transaction Command - Display Window



Door	Card Holder	Card ID	AMAG Outcome	Image	Timestamp
Reader 1 (Reader)	Happy Tester	4	Granted Access [4] (Cardholder: Happy Tester, Badge Number: 4)		2018-09-19T13:50:38
Reader 1 (Reader)	Happy Tester	4	Granted Access [4] (Cardholder: Happy Tester, Badge Number: 4)		2018-09-19T13:50:37
Reader 1 (Reader)	Happy Tester	4	Granted Access [4] (Cardholder: Happy Tester, Badge Number: 4)		2018-09-19T13:50:34
Reader 1 (Reader)	Happy Tester	4	Granted Access [4] (Cardholder: Happy Tester, Badge Number: 4)		2018-09-19T13:50:34
Reader 1 (Reader)	Happy Tester	4	Granted Access [4] (Cardholder: Happy Tester, Badge Number: 4)		2018-09-19T13:50:32

Navigation controls: << < 1 of 1 > >> Close

Reader Commands

Table 2 on page 19 defines the Reader Commands and their descriptions:

Table 2: Reader Commands and Descriptions

Command	Description
Suppress Alarms	Suppress alarms for this reader.
Reactivate Alarms	Reactivate suppressed alarms for this reader.
Lock Door	Lock the reader door.
Unlock Door	Unlock the reader door.
Grant Access	Grant access for this door and momentarily open the door.
Enable Reader	Enable the reader.

Command	Description
Disable Reader	Disable the reader.
Return to Schedule	Return to a schedule configured on the AMAG server.

Monitor Point Commands

Table 3 on page 20 defines the Monitor Point Commands and their descriptions:

Table 3: Monitor Point Commands and Descriptions

Command	Description
Suppress Alarms	Suppress alarms for this output.
Reactivate Alarms	Reactivate suppressed alarms for this output.
Output On	Switch the output on.
Output Off	Switch the output off.
Output Pulse	Switch output on or off momentarily.
Return to Schedule	Return to a schedule configured on the AMAG server.

Auxiliary Output Commands

Table 4 on page 20 defines the Auxiliary Output Commands and their descriptions:

Table 4: Auxiliary Output Commands and Descriptions

Command	Description
Suppress Alarms	Suppress alarms for this output.
Reactivate Alarms	Reactivate suppressed alarms for this output.
Output On	Switch the output on.
Output Off	Switch the output off.
Output Pulse	Switch output on or off momentarily.
Return to Schedule	Return to a schedule configured on the AMAG server.

Node Commands

Table 5 on page 20 defines the Node Commands and their descriptions:

Table 5: Node Commands and Descriptions

Command	Description
Suppress Alarms	Suppress alarms for this node.
Reactivate Alarms	Reactivate suppressed alarms for this node.

Maps

Introduction

The Maps feature provides a dynamic view of physical security objects within a visual representation of their environment.

Physical objects are represented by icons to form an integrated and unified view, which also allows monitoring and reaction to state changes in real time.

You can set the Real-time visualization of event activity by linking the Map actions to Events.

The following are the supported image files:

- *.dwg or *.dxf (Vector)
- *.png or *.jpg (Raster)

Note


- victor automatically converts vector graphics to .jpg and stores them in the database.
- Only CAD Layers visible at the time of import are visible within the image in victor. However, once imported, you can add a new layers to the converted CAD image and use to configure icons. The actual CAD layers do not exist in victor.
- You can update the Map Image files without disassociating the icons which were previously placed on the map.
- victor supports image files up to 20 MB.

Map Template

Use the Map Template to create and configure template icons. Any icon created in the Map Template becomes a template for icons of the same type on all maps in your system.

The annunciation and alert color settings from the template icon, replaces the default annunciation and alert color settings for new icons of that type added to any map.

Procedure 7-1 Configure a Template Icon

Step	Action
1	Select Map from the Show All Items tab.
2	Right-click the Map Template and click Edit . The Map editor opens.
3	Click icon  , the Icon Selector opens.
4	Click on object icon to add the object to the map.
5	Right-click the icon and select Drop on Map . The Template Icon Editor opens.
6	Click Select Object .
7	Select an object from the list and click OK .
8	In the Assign Alert section, configure the annunciation settings as required.

- a Select the Annunciation type for an alert. The available options are: None, Strobe, Pulse, Blink, Fade, Solid, Wave, Ripple and Template.
- b In the Color cell, select **Custom...** from the drop-down menu.
- c Select an alert color from the menu or click **Advanced** to choose a color from the advanced color menu, then click **OK** to confirm color selection.

Note

Object annunciation and color settings are applied to new icons of the same type added to a map. Other template settings are not applied to new icons.

Note

Optional: Click **Reset to default value** to restore the default annunciation and color settings for the object.

- 9 Click **OK**.
- 10 Click **Save** to save the changes to the Template icon.

- End -


Create a Map

Procedure 7-2 Import a Map Image

Import a Map Image and add the points manually. The following are supported image files for Map Image:

- *.dwg or *.dxf (Vector)
- *.png or *.jpg (Raster)

Step	Action
------	--------


- | | |
|---|--|
| 1 | Select Map from the Add New Item tab. |
| 2 | Enter a name for the map in the Name text box. |
| 3 | Enter a description for the map in the Description text box. |
| 4 | The Enabled check box is selected by default, clear the check box to disable the map. |
| 5 | Select icon  , to open browse window. |
| 6 | Browse and select the required image file, and then click Open . |
| 7 | Optional: If you are importing a CAD file (.dxf or .dwg), you can set the level of compression by entering a Height and Width in the corresponding text boxes. |
| 8 | Select Import , to import and display the file in map editor. |
| 9 | Click Save to save the changes. |

- End -

Add or Configure Icons

After you import an image to create a map, you can configure the map for use by adding icons. Icons are added to maps to represent victor objects. Various icon properties are configured depending on the object type they represent.

Procedure 7-3 Add and Configure Icons

Step	Action
1	Open the map in edit mode.
2	Click icon  , the icon selector opens.
3	Select the required icon to add into the map.
4	Move the icon to the required position on the map and right-click to select Drop on Map . The Icon Editor displays.
5	Click Object to display the Object Selector.
6	Select the object to link to the icon and click OK .
Note If the Not in map check box is selected in the Object Selector, then only the items which are not added to the map are displayed. Clear the Not in map check box to display all items.	
7	Click OK .
8	Assign characteristics in the Icon Editor if required.
9	Click Save to save the changes.
- End -	

Add or Configure Icons Using Drag and Drop

Icons are added to maps to represent victor objects. Various icon properties are configured depending on the object type they represent.

Procedure 7-4 Add and Configure Icons Using Drag and Drop

Step	Action
1	Drag and drop victor objects from Device List into the Map editor. An icon is added to the map, and linked to the victor object.
Note Objects can also be dragged into maps from the Site, Call ups and Object lists.	
2	Following are the steps to configure an icon's characteristics: <ol style="list-style-type: none"> Right-click the icon.

- b Click **Edit**.
 - c Assign characteristics in the **Icon Editor** and Click **OK**.
- 3 Click **Save** to save the changes.

- End -

Clone Icons

You can use an existing icon as a template to configure a new icon.

Procedure 7-5 Clone Icon Configuration

Step	Action
1	From the Map Editor, select the icon you want to clone from.
2	Drag and drop a victor object from Device List. The icon (with original icons configuration) is added to the map.
3	Right-click the new icon and edit as required.
- End -	

Configuring areas

Procedure 7-6 Configure an Area

victor Maps agrees for the configuration of areas in order to group icons. The entire area highlights if any icons related to an area go into Alert status. This applies to icons where annunciation is set to Strobe, Pulse, Blink, Fade, Ripple, Wave or Flash.

Step	Action
1	Select Map from the Show All Items tab.
2	Right-click on the map and select Edit .
3	In the Map Editor, hold the Shift key and draw the required area.
4	You can work with the area using the grab handles and by right-clicking and selecting from the following options:

- Select all related icons
- Clear all related icons
- Hide this shape drawing
- Remove this shape drawing
- Send to back
- Bring to front
- Display automatically when in view mode
- Priority Animation (select to alert the area with the highest priority alert from all objects within the area).

- End -

Polygon Shapes

A Polygon Shape is added to a Map icon placed on another Map to increase the annunciation area, when the icon goes into alert (Strobe, Pulse, Blink, Fade, Ripple, Wave, Flash or Solid only). When the polygon shape goes into alert, the entire alert area is selected, and drills down to the lower level map.

Procedure 7-7 Polygon Shapes

Step	Action
1	Configure the Map icon.
2	Right-click the Map icon and select Polygon Shape .
3	Click Add , a triangle displays.
4	You can work with the area using the grab handles.
5	Move and resize the triangle as required to represent the area that the detailed (building) Map covers. Various right-click options are available for the shape, following are the examples: <ul style="list-style-type: none"> • Hide this shape drawing • Remove this shape drawing • Send to back • Bring to front • Display automatically when in view mode
6	To add an additional grab handle, right-click on an existing grab handle and select Add New Point . This allows further usage of Polygon Shape.
7	Click Save to save the changes.

- End -

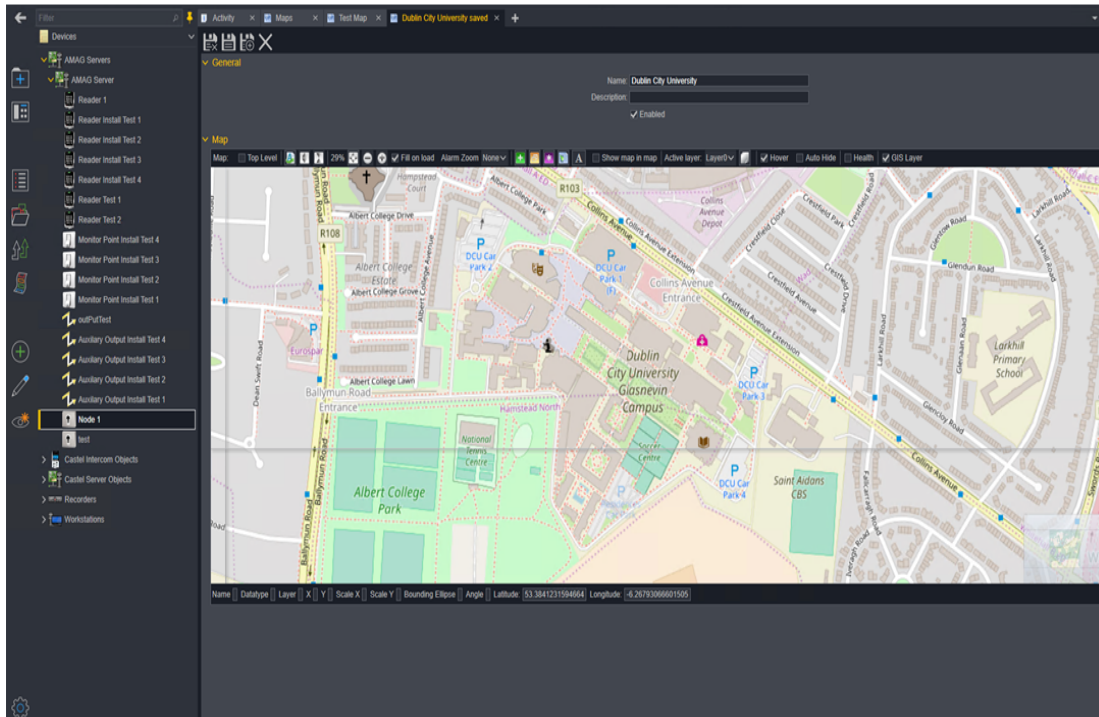
GIS Level Maps

GIS Level Maps is used, where an overview of your facility or site is required. For example, you can use a GIS Level Map to show all buildings on a corporate campus, with each building represented by an individual map.

You can drill down to show an overview of each building by clicking on it and drill down further to show each floor or area.

Select the **GIS Level** check box when creating a GIS Level Map. This improves the navigation performance with the use of caching to reduce load time.

Figure 7-1 Device List-GIS Level Map



Alarm Zoom

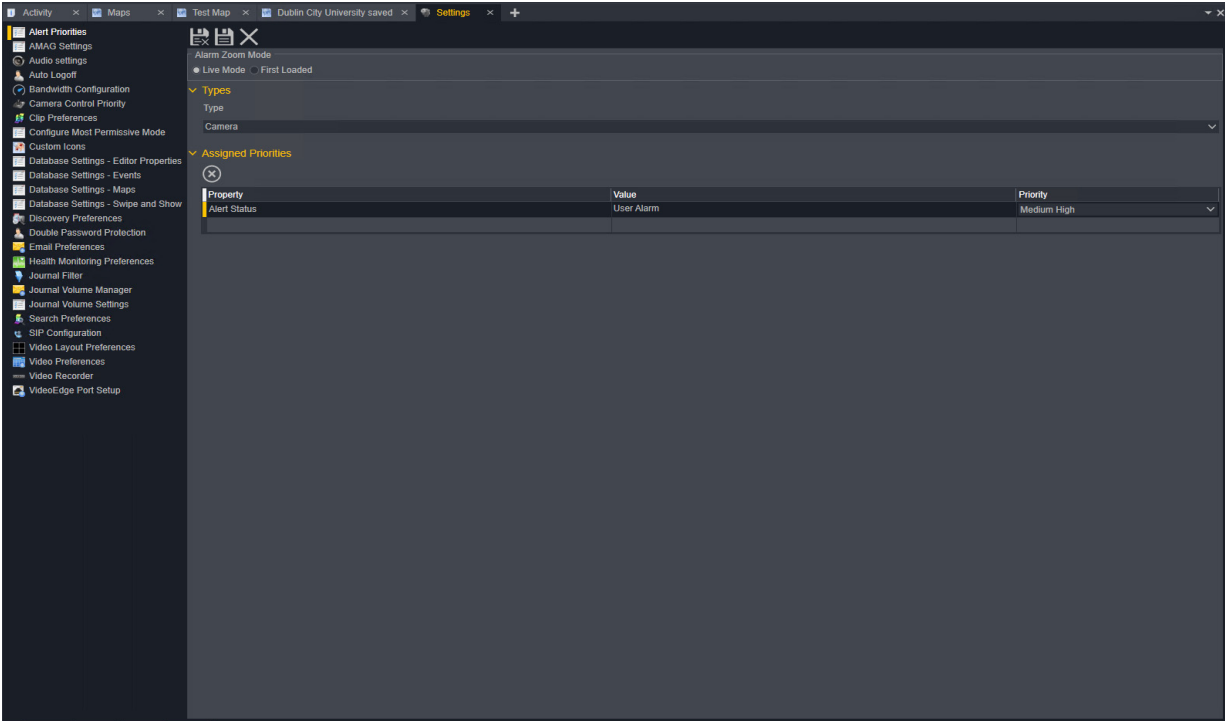
When an object goes into alarm, it annunciate based on configuration in the **Icon Editor**. The **Alarm Zoom** setting enables the Map to zoom to the alarming object.

If Alert Priorities are configured (**System Configuration>Settings>Alert Priorities**), the Map will zoom to the current highest priority alarming object.

You can select the following settings from the **Alarm Zoom** drop-down:

- **None:** Turns Alarm Zoom off.
- **High:** Sets the zoom level with high, the maximum zoom level.
- **Medium:** Sets the zoom level with medium, the moderate zoom level.
- **Low:** Sets the zoom level with low, the low the minimum zoom level.

Figure 7-2 Alarm Zoom



Live Mode vs. First Loaded

By default, the Alarm Zoom will zoom to the first or highest priority alarming object (First Loaded). System Values>Alert Priorities allows configuration of Live Mode which means the Map will zoom to all new alarms as they are activated.

Map in Map

Map in Map shows the current zoom level and position within a map.

You can toggle **Map in Map**, On or Off by selecting the **Show Map in Map** check box in the Map tool bar. The default selection is Off.

When creating or editing a Map, select the **Show Map in Map** check box to show Map in Map as default for the current Map.






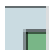

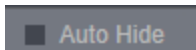
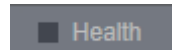
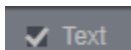
Viewing Maps

You can view a Map directly from the **Show All Items** tab, after you create and save a Map.

Procedure 7-8 View Maps

Step	Action
1	Select Maps from the Show All Items Tab .
2	You can work with the Map using the tool bar buttons, as detailed in Table 1 on page 28:

Table 1: Tool-bar Elements and Details

Element	Details
	Zoom Controls: Displays current zoom level percentage along with Fit to Window and Zoom Out/In buttons.
	Hide Icon Types: Opens the Hide Type editor which allows selection of icon types to hide, such as Cameras or Recorders.
	<p>Show All Icons from All Layers: Shows and highlights all icons from all visible layers.</p> <p>Note</p> <p>Icons that are on layers, and hidden using the Map Layers Editor are not displayed.</p>
	<p>Show All Shapes from All Layers: Shows all configured areas from all visible layers. Right-click to display FoV or Shapes only.</p> <p>Note</p> <p>Areas that are on layers, and hidden using the Map Layers Editor are not displayed.</p>
	<p>Activity List: Opens a map specific Activity List that displays the 100 most recent activities relating to objects on the map. Icon will display with a red border when there are unread items in the Activity List.</p> <p>Right-click and select Clear to clear the activity list. Select the Padlock icon to freeze the Activity List for 30 seconds.</p>
	Show Map in Map: Opens a Map in Map image in the bottom right of the Map Viewer, indicating current zoom level.
	Layers: Opens Map Layers Editor allowing selection of map layers to show or hide.
	Auto Hide: This works in conjunction with Hover Mode. When Auto Hide is enabled, the surveillance pane closes automatically when the mouse is moved off the icon that initiated surveillance pane. If Hover Mode is disabled, auto close cannot be selected. This works in both edit and view mode.
	Health Mode: Select to enable Health Mode. When enabled, icons are highlighted with their health status. When enabled with Hover Mode, hovering over icons will display the objects health dashboard within the map view.
	Show Text shapes: Select to show all text shapes on the map. This option is selected by default.

Note

When viewing a map, drag any icon onto any surveillance pane to view its associated video.

- End -

Editing Maps

You can edit the properties of a Map, after you create and save a Map.








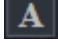
Procedure 7-9 Edit Maps (General)

Step	Action
1	Select Maps from the Show All Items tab.
2	Right-click the map to be edited and click Edit . Map Editor opens.
3	Edit Name , Description , Enabled status in General section as required.
4	Click Save to save the changes.
- End -	

Procedure 7-10 Edit Maps (Map)

Step	Action
1	Select Maps from the Show All Items tab.
2	Right-click the map to be edited and click Edit .
3	Map editor opens.
4	You can work with the Map using the tool bar buttons, as detailed in Table 2 on page 29:

Table 2: Tool-bar Elements and Details

Element	Details
	Import a Map: Re-import the map image.
	Increase/Decrease height of map window: Increases or decreases the height of a map window.
	Fill Image in Window: Fits map to window
	Add Object Icon: Add an object icon to the map.
	Copy Icon to Active Layer: Copy an icon to the current active map layer.
	Show All Icons from All Layers: Displays all icons from all layers of the map.
	Show All Shapes from All Layers: Displays all shapes from all layers of the map. Right-click to display FoV or Shapes only.
	Add Text: Displays a field enabling free text input. Font size or colour or type can be changed as required. Text boxes can be copied to other areas of the map.

Element	Details
Active layer: Layer0 ▾	Active layer: The current active map layer.
<input type="checkbox"/> Show map in map	Show Map in Map: Opens a Map in Map image in the bottom right of the Map Viewer, indicating current zoom level.
<input type="checkbox"/> GIS Layer	GIS Layers: Make this map a GIS Map.
<input checked="" type="checkbox"/> Hover	Hover: Enable or Disable hover in the map editor.

- 1 Edit map elements as required.
- 2 Click **Save** to save the changes.

- End -

Procedure 7-11 Edit Maps (Map Icons)

You can edit the properties of a Map or copy to create a new Map icon after an Icon is added to a map. Available options vary depending on map icon type.

Step	Action
1	Select Maps from the Show All Items tab.
2	Right-click the map to be edited and click Edit . Map editor opens.
3	Right-click on the icon you wish to edit and select required option from the right-click menu.
4	Make changes as required.
Note To copy both the icon and all its properties, select Copy from the right-click menu, such as assigned object and assigned left click action.	
5	Click Save to save the changes.

- End -

Event Configuration

Overview

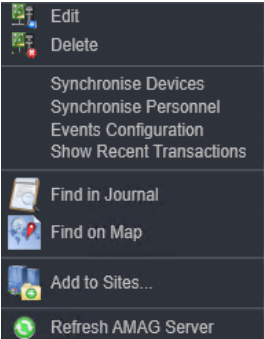
The AMAG integration includes functionality that allows alarm type configuration at the AMAG level, which is to enable or disable alarm types per server and also enable or disable alarms per device.

This effects the alarm processing at the victor AMAG driver level. Incoming alarms are filtered in the driver based on this configuration and either journalled or not journalled into victor.

Procedure 8-1 Alarm Type Configuration Editor

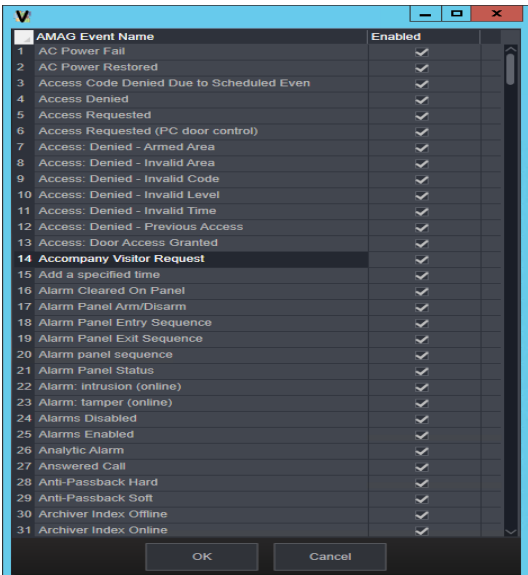
Step	Action
1	Select Events Configuration from the AMAG Symmetry Server object's right-click command list. Refer to Figure 8-1 AMAG Symmetry Server Object - Command List on page 31.

Figure 8-1 AMAG Symmetry Server Object - Command List



- | | |
|---|---|
| 2 | Alarm List Editor opens, as shown in Figure 8-2 Alarm List Editor on page 32. |
|---|---|

Figure 8-2 Alarm List Editor



Note
The name that appears in the CEM system as alarm name is defined as AMAG Event Name.

- 3 You can enable or disable the AMAG alarm types by selecting or clearing the check boxes in the **Enabled** column.
- 4 Click **OK** to save the configuration.

- End -

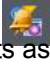
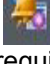
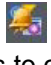

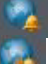

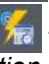

Procedure 8-2 Enable or Disable Alarms for AMAG devices

Step	Action
1	From any AMAG device (such as Reader/Monitor Point/Auxiliary Output/Node), right-click on the device from the device tree or dynamic view or from map.
2	Select Suppress/Reactivate Alarms from the command list. This enables or disables the creation of victor journal entries for that device.

- End -

Procedure 8-3 Events/Schedule Setup Editor

You can build the multiple event configurations using the Event Schedule Setup Editor more efficiently than building the single event configurations (one at a time) for AMAG objects.

Step	Action
1	Select System Configuration .
2	Select Events/Schedule Setup . Events Setup editor appears.
3	Double-click the Devices Node and use the Object Selector to select the device (Or drag and drop from the device list).
4	Select icon  in Node of the device added and use the check boxes in the drop-down to assign alerts as required.
5	Select Add Alerts . Selected alerts are displayed under the Alerts node.
6	Select icon  in the Alerts node and use the Object Selector to assign Actions.
7	Repeat as required. Use icon  and icon  to add and remove objects.
8	Use Merge and Clone options to copy configurations.
9	Following are the configuration options with icons. <ul style="list-style-type: none"> a Icon  : Merge and clone target configuration. b Icon  : Duplicate source configuration to all targets. c Icon  : Remove configuration on source and target.
10	Use icon  to add or remove the schedules, refer to the <i>victor Unified Client Configuration and User Guide</i> for more information on using and configuring Event Schedules.
11	Click Save to save the changes.

- End -

Procedure 8-4 AMAG Actions

Users can create AMAG Integration specific actions, to tie together system events with actions you wish to trigger.


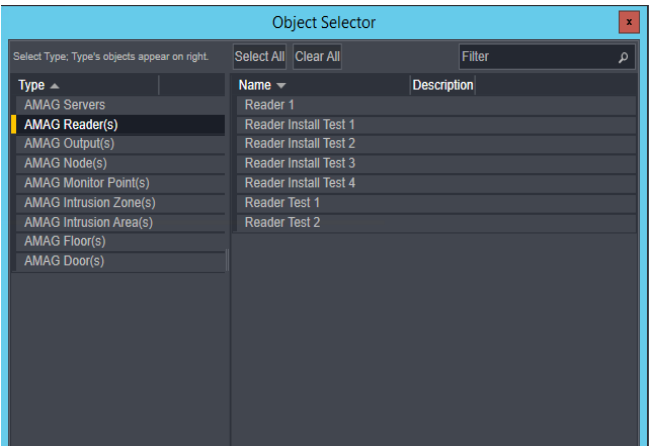
Step	Action
1	Select AMAG Action from the Create New Item tab.
2	Enter a Name and Description in the Name and Description fields.
3	Click icon  to add device(s) for this action.
4	Select one or many devices to include in the action.

Figure 8-3 Object Selector



- 5 Select the action to execute. Refer to Figure 8-4 AMAG Reader - Actions on page 34 for available actions:

Figure 8-4 AMAG Reader - Actions



- 6 Click **Save** to save the changes.

- End -

Event or Action Pairing Editor

You can build multiple event configurations using the Event/Action Pairing Editor, quicker and easier than building the single event configurations (one at a time) for AMAG objects.

The Event or Action Pairing Editor is used to tie together system events with actions.

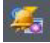
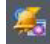

Note

Event/Action association can only be made in this editor.

Procedure 8-5 Events/Action Pairing

Step	Action
------	--------

- 1 Select **Event** from the **Create New Item** tab.

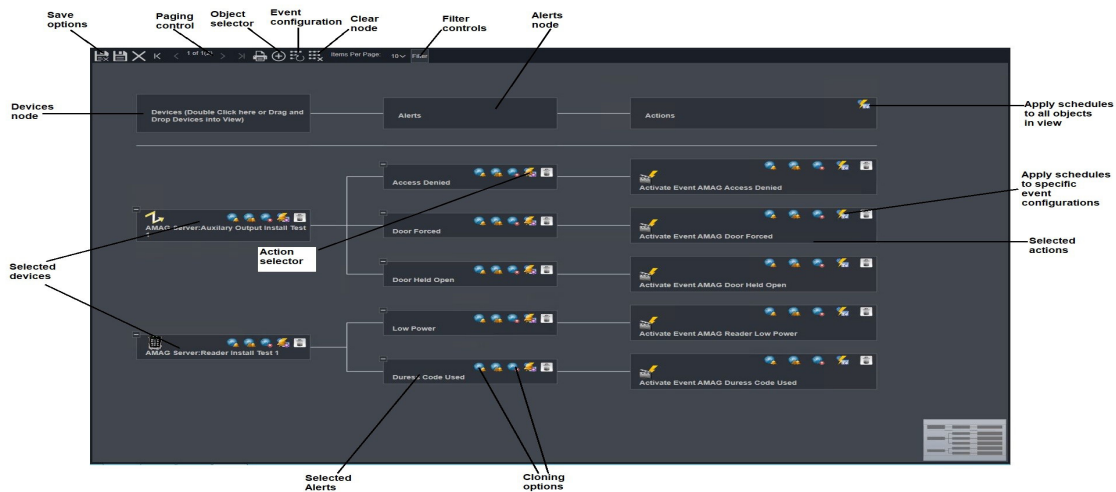
- 2 Select **Event/Action Pairing** from the top tool bar. Editor opens.
- 3 Click the **Events** Node and use the Object Selector to select events as required.
- 4 Select icon  in the **Event** Node and use the Object Selector to assign event **Actions**.
- 5 Repeat as required. Use icon  and icon  to add and remove objects.
- 6 Click **Save** to save the changes.

- End -

Events Setup

The Events/Schedule Setup Editor provides a Dynamic, Visual method of batch linking Devices, Alerts and Actions, and also set up Event Scheduling.

Figure 8-5 Events Setup Editor



Event Status Mapping

Event status mapping is not supported by this integration, however both event and restore events are supported as event types.

Settings

Introduction

You can configure a range of system wide settings from a single editor. You can access **Settings** using the **System Configuration** icon.

For the victor AMAG Integration these settings are helpful to increase logging level that gets exported to the Windows Event Viewer.

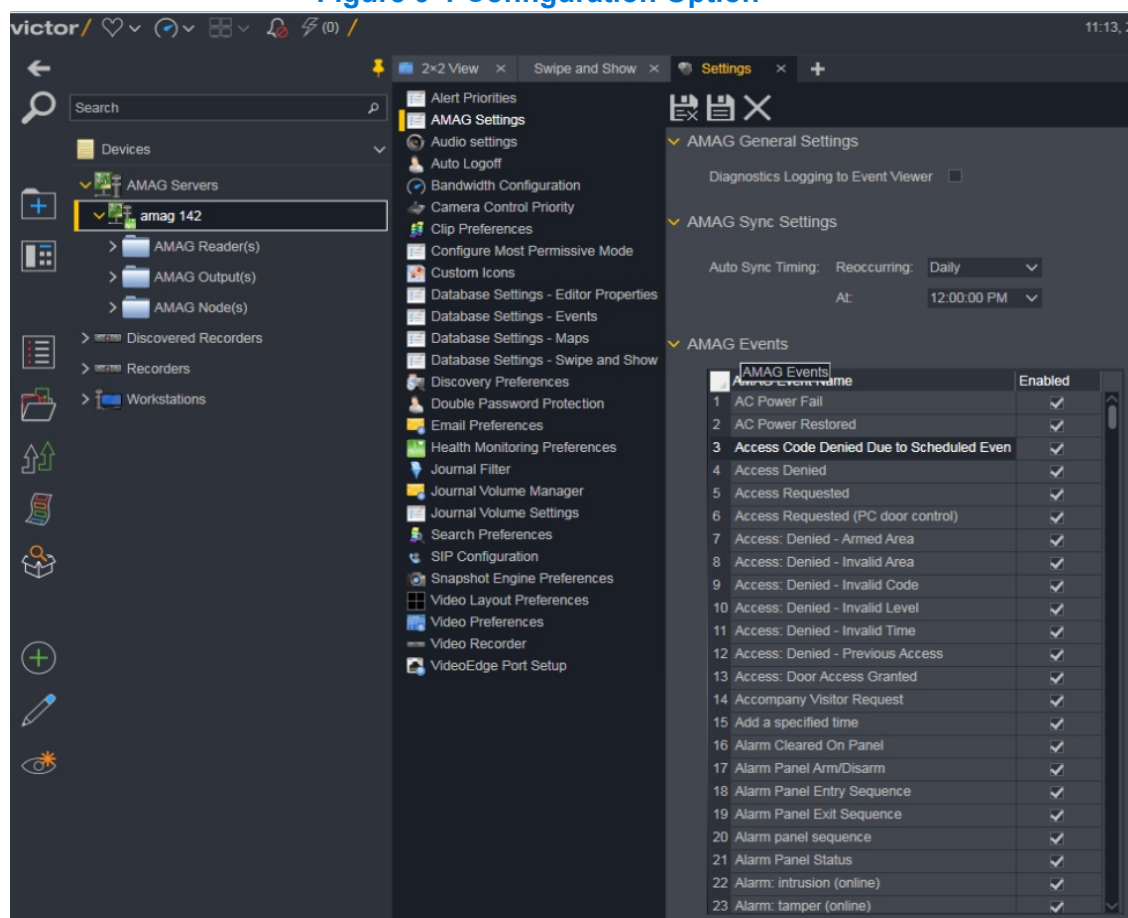
AMAG Settings

AMAG Settings are **Global Integration-wide** settings for AMAG Objects.

Select **System Configuration** and **Settings** to display the following configuration option:

- Diagnostics Logging to Event Viewer: You can use this feature to enable or disable Diagnostic level logging in the Event Viewer.

Figure 9-1 Configuration Option



Note

This setting is applied after you click **Save**. No driver restart is required.

AMAG Device States

Overview

The following sections lists the states supported by each of the AMAG object types in victor and the object state icons supported. The order shown in the Table 1: AMAG Server States and Values on page 37 reflects the order in which an image is selected and displayed for each object type.

AMAG Server States

The Table 1 on page 37 describes the AMAG Server States and its values.

Table 1: AMAG Server States and Values

State	State values
Devices Sync Status	Synchronization Status Unknown Synchronization Failed Synchronizing Synchronized
Connection Status	Connection Status Unknown Connection Failed Connecting Connection Successful Disconnected
Personnel Sync Status	Synchronization Status Unknown Synchronization Failed Synchronizing Synchronized

Reader States

The Table 2 on page 37 describes the Reader States and its values.

Table 2: Reader State and Value

State	State values
Latest Alarm	See List of supported Alarms in AMAG Alarms section, refer to Table 1: Supported Alarms on page 39.

Monitor Point States

The Table 3 on page 38 describes the Monitor Point States and its values.

Table 3: Monitor Point States and Values

State	State values
Latest Alarm	See List of supported Alarms in AMAG Alarms section, refer to Table 1: Supported Alarms on page 39.
Status	Open Closed Note <hr/> This property is only updated when option synchronise devices is executed.

Auxiliary Output States

The Table 4 on page 38 describes the Auxiliary Output States and its values.

Table 4: Auxiliary Output States and Values

State	State values
Latest Alarm	See List of supported Alarms in AMAG Alarms section, refer to Table 1: Supported Alarms on page 39.
Status	Output On Output Off Output Pulse Note <hr/> This property is only updated when option synchronise devices is executed.

Node States

The Table 5 on page 38 describes the Node States and its values.

Table 5: Node State and Value

State	State values
Latest Alarm	See List of supported Alarms in AMAG Alarms section, refer to Table 1: Supported Alarms on page 39.

AMAG Alarms

AMAG Alarms

The Table 1 on page 39 describes the list of supported Alarm types.

Table 1: Supported Alarms

Alarms
No Alarm
AC Power Fail
AC Power Restored
Access Code Denied Due to Scheduled Even
Access Denied
Access Requested
Access Requested (PC door control)
Access: Denied - Armed Area
Access: Denied - Invalid Area
Access: Denied - Invalid Code
Access: Denied - Invalid Level
Access: Denied - Invalid Time
Access: Denied - Previous Access
Access: Door Access Granted
Accompany Visitor Request
Add a Specified Time
Alarm Cleared On Panel
Alarm Panel Arm/Disarm
Alarm Panel Entry Sequence
Alarm Panel Exit Sequence
Alarm Panel Sequence
Alarm Panel Status
Alarm: Intrusion (Online)
Alarm: Tamper (Online)
Alarms Disabled
Alarms Enabled
Analytic Alarm
Answered Call
Anti-Passback Hard
Anti-Passback Soft
Archiver Index Offline
Archiver Index Online

Alarms
Archiving Failed
Archiving Started
Archiving Stopped
Archiving Succeeded
Area Arm Time Changed
Area Armed
Area Armed Early
Area Disarmed
Area Disarmed Outside Schedule
Area Failed to Arm
Area In Alarm
Area Late to Arm
Area Late to Disarm
Area Partially Armed
Area Reset
Arm Common Panel
Arming Cancelled
Arming: Area Late to Arm
Arrived Too Early At Point
At Wrong Door
At Wrong Time
Audio Activity Alarm
Audio Activity Normal
Auto Control In Core Time
Autoarm Cancelled
Autoarm Delayed
Automatic Arming Aborted by User
Automatic Download In Progress
BACnet Door Pseudo
BACnet Monitor Point Pseudo
Call Request
Camera Restarted
Card Command
Card Data Request
Card Expired
Cardwatch
Client/Server Offline
Client/Server Online
Command Failed
Communication Failure to Salto Server

Alarms
Configuration Changed
Configuration Error
Connect Failed - Busy
Connect Request
Connect Successful
Connected
Connecting
Controller Comms Failed
Controller Comms Restored
Database Potentially Out of Date
Database Upto Date
Date/Time Changed
Daylight Saving Adjustment Made
Delay Autoarming
Deleted For PIN
Dial-In Alarm Received
Disarm Common Panel
Disconnected
Door Alarm Reset
Door Battery Low
Door Closed
Door Closed: Key
Door Closed: Key and Keyboard
Door Closed: Keyboard
Door Closed: Switch
Door Forced
Door Held Open
Door Left Opened (DLO)
Door Monitor Circuit Normal
Door Monitor Circuit Open
Door Monitor Circuit Shorted
Door Monitor Closed
Door Monitor Open
Door Most Probably Opened: Key and PIN
Door Not Opened
Door Open
Door Opened: Inside Handle
Door Opened: Key
Door Opened: Key and Keyboard
Door Opened: Keyboard

Alarms
Door Opened: Mechanical Key
Door Opened: Multiple Guest Key
Door Opened: Online Command
Door Opened: PPD
Door Opened: Spare Card (Hotel)
Door Opened: Switch
Door Opened: Unique Opening
Door Programmed with Spare Key
Door Reclosed
Door Set To
Duress
Duress Alarm
Duress Code Reset
Duress Code Used
Emergency Alarm
End of DLO (Door Left Opened)
End of Forced Closing (Online)
End of Office Mode
End of Office Mode (Online)
End of Privacy
Entry Timer Expired
Entry Timer Reset
Entry Timer Started
Entry Timer Stopped
Exit Timer Started
Exit Timer Stopped
Entry/Exit Zone in Alarm
ENVS Scheduled Operation
ENVS Trigger Operation
Equipment: Add
Equipment: Adjust
Equipment: Remove
Equipment: Repair
Equipment: Replace
Equipment: Test
Exit Button Circuit Normal
Exit Button Circuit Open
Exit Button Circuit Shorted
Exit Button Closed
Exit Button In Alarm

Alarms
Exit Button Normal
Exit Button Open
Failed Connection
Failed to Communicate with Phone Line 1
Failed to Communicate with Phone Line 2
Failed to Communicate with Phone Line 3
Fire Alarm
Floor Access
Free Space is Low
General Alarm
General Error
General Event
General HI SEC Error
Granted Access
Hard Disk Full Warning
Hardware Failure
Hardware Information
Hardware Warning
Hold Up Alarm
Hold Up Code Used
Holiday: Schedule A
Holiday: Schedule B
Holiday: Schedule C
Host Clock Advanced
Host Clock Retarded
Hotel guest cancelled
Inactive
Infranet Fail to Communicate 1
Infranet Fail to Communicate 2
Infranet Fail to Communicate 3
Infranet Fail to Communicate 4
Infranet Primary Fail 1
Infranet Primary Fail 2
Infranet Primary Fail 3
Intercom Call
Intrusion Alarm
Intrusion Operation Warning
Intrusion Panel Restored
Intrusion Panel Timed Out
Intrusion Panel Transaction

Alarms
IP Address Change
IP Camera Offline
IP Camera Online
Key Deleted (Online)
Key has not been comp updated (Online)
Key Inserted (Energy Saving Device)
Key Removed (Energy Saving Device)
Key Updated (Online)
Keycard Set IN
Keycard Set OUT
LAN Retry
LAN Answered Call
LAN Connected
LAN Connecting
LAN Disconnected
LAN Error
LAN Failed Connection
Least Used Card Deleted
License Registration Warning
Loitering
Loss of Time Trouble Cleared
Lost Card
Low Battery Level
Low Power
Low Power Restored
Mains Fault
Media Full
Media Ok
Media Space Low
Menu Entered by User
Modem Error
Monitor Point & Tamper in Alarm
Monitor Point Changed
Monitor Point Circuit Open
Monitor Point Circuit Shorted
Monitor Point Closed
Monitor Point In Alarm
Monitor Point Normal
Monitor Point Open
Monitor Point Tamper Alarm

Alarms
Monitor Point Tamper Normal
Motion Alarm
Motion Normal
Network Address Error
Network Loss
Network Restored
New Hotel Guest Key
New Renovation Code
No Free Space Available
Node Back In Service
Node Buffer > 75% Full
Node Buffer Overflow
Node Clock Advanced
Node Clock Retarded
Node Firmware Error
Node Hardware Error
Node Powered Down
Node Restored On Primary
Node Restored On Secondary
Node Tamper
Node Tamper Normal
Node Timed Out
Node Timed Out On Primary
Node Timed Out On Secondary
Not Allowed: Antipassback
Not Allowed: Denied by Host
Not Allowed: Does Not Override Privacy
Not Allowed: Door in Emergency State
Not Allowed: Hotel Guest Key Cancelled
Not Allowed: Invalid Pin
Not Allowed: Key Cancelled
Not Allowed: Key Expired
Not Allowed: Key Not Activated
Not Allowed: Key Not Allowed in Door
Not Allowed: Key Out of Date
Not Allowed: Key with Old Renovation Number
Not Allowed: Locker Occupancy Timeout
Not Allowed: No Associated Authorization
Not Allowed: Old Hotel Guest Key
Not Allowed: Out of Time

Alarms
Not Allowed: Run Out of Battery
Not Allowed: Unable to Audit on the Key
Not Allowed: Unique Key Already Used
Not Yet Valid
Object Enter Area
Object Exit Area
Object Presence
Offline
Online
Online Peripheral Updated
Out of Sequence Now at Point
Output Off
Output On
Output Pulse
Output Toggle
Overdue At Point
Panel Blocked
Panel Failed to Communicate
Panel Fault
Panel Issue
Panel Reset
Panel Warm Start
Panic Alarm
Password Changed
Patrol Tour Complete
Patrol Tour Held
Patrol Tour Reset
Patrol Tour Restarted
Patrol Tour Started
PPD connection
Pre-Arm Timer Started
Pre-Arm Timer Stopped
PTZ Command
PTZ Preset Activated
PTZ Started
PTZ Stopped
Qualifier: Service
Reader Pair Powered Down
Reader Tamper
Reader Tamper Normal

Alarms
Recording Mode Changed
Repeated Alarm for Seismic Zones
Request Card File
Request Daylight Savings
Request Dial Up File
Request Doors File
Request Holiday File
Request If/Then File
Request Logical Functions
Request Misc Files
Request Monitor Point File
Request Multinode 1 Misc Files
Request Reader File
Request Scheduled Commands
Request Time Code File
Retry
Room Prepared (Energy Saving Device)
Sabotage Alarm
Scene Changed
Schedule: Permanent Schedule
Schedule: Primary Schedule
Schedule: Secondary Schedule
Schedule: Shift Four
Schedule: Shift One
Schedule: Shift Three
Schedule: Shift Two
Schedule: Temporary Schedule
Scheduled Operation
Script Alarm
Script Error
Script Event
Script Upload
Search Required
Serial Port Command
Server Offline
Server Online
Server Restarted
Server Shutdown
Service: Start Service Person
Service: Stop Service Person

Alarms
Silence Local Alarm
SNTP Clock Adjusted
Soak Test
Soft Sabotage
Start of Forced Closing (Online)
Start of Office Mode
Start of Office Mode (Online)
Start of Privacy
StartUpTransaction
Station Busy
Station Free
Storage Failure
Storage Information
Storage Media Check Failed
Storage Media Check OK With Errors
Storage Media Corrupted
Storage Media Hardware Failure
Storage Media Hardware Lifetime Warning
Storage Media Not Present
Storage Media Quota Reached
Storage Warning
Streaming Archiver Offline
Streaming Archiver Online
Streaming Server Offline
Streaming Server Online
Successful Clock At Point
Switch Building Control Off
System Event
System Fully Armed
System Unarmed/Partially Armed
System: Abort by User
System: Device Missing
System: Device Restored
System: Message General
Technical Alarm
The Firmware on the Panel is Incompatible
Time Change Complete
Time Modified (Daylight Saving Time)
Transaction Log Running at Capacity
Trigger Operation

Alarms
Tripwire
Unattended Object
Unknown Card
Unknown Error
Unknown Fingerprint:
Unknown Multinode Alarm
Unknown Reader Alarm
User Access Denied
User Access Granted
User Added
User Change
User Cleared Alarm List
User Cleared Fault List
User Code Lockout
User Code: Code Added
User Code: Code Changed
User Code: Code Deleted
User Delayed Automatic Arming
User Deleted
User Duress Code Used
User Edited
User Logged Off
User Logged On
User PIN Changed
Valid Access At In Reader
Valid Access At Out Reader
Valid Card Transaction
Video Database Running at Maximum Capacity
Video Picture Loss
Video Picture Restored
Video Server Restarted-Unexpected Error
Video Signal Interruption
Video Signal Loss
Video Signal Restored
Walk Test Zone Fail
Walk Test Zone Verify
Warning Overwriting Standard Recordings
Warning Overwriting Tagged Recordings
Warning: Simulated Transactions Active
Wireless Zone Low Battery

Alarms
Wireless Zone Missing
Wrong Customer Code
Wrong Direction
Wrong Hand Template
Wrong Issue Number
Wrong PIN
Zone Armed
Zone Bypass by Call Out Guard
Zone Bypassed
Zone Disabled
Zone Disarmed
Zone Enabled
Zone Force Armed
Zone Group Armed
Zone Group Disarmed
Zone Group in Alarm
Zone Group Test
Zone In Alarm
Zone In Fault
Zone In Tamper
Zone Reset
Zone Test
Zone Unbypassed